

# ENRICHMENT MATERIALS

## SUBOPTIMAL INTEREST

### CYLINDER TO CHEW KIT Ø 29 MM (CORN + WOOD)



6402032

- Organic material (pressed wood and corn)
- Ø outside : 75 mm
- Ø inside : 29 mm
- Length : 155 mm
- 6 edible screws included (chain not supplied)
- Also exists in Ø 35 mm (Ref. 6402035)

### POST-WEANING WOODEN TOY KIT



9305036

- Kit composition :
  - 1 stainless-steel mount for wooden toy 50 x 50 mm, HT 350 mm, W 110 mm
  - 1 dry Norway spruce upright 45 x 45 mm, 2,10 m long
- Fasteners included for 35 mm thick partition
- Also available as upright alone (Ref. 4602019)

### STAR TO CHEW KIT Ø 200 MM (CORN + WOOD)



9305042

- Organic material (pressed wood and corn)
- Dimensions :
  - Ø outside : 200 mm
  - Ø inside : 15 mm
- To be fixed with fast link included (chain not supplied)
- Also exists as star alone (Ref. 6402030)

### FATTENING WOODEN TOY KIT



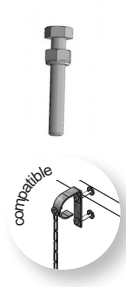
9305037

- Kit composition :
  - 1 stainless-steel mount for wooden toy 80 x 80 mm, HT 700 mm, W 140 mm
  - 1 dry Norway spruce upright 75 x 75 mm, 2,10 m long
- Fasteners included for 50 mm thick partition
- Also available as upright alone (Ref. 4602024)

### ORGANIC BALL TO CHEW KIT Ø75 MM



9305043



- Organic material (sugar cane, wood fibers)
- Biocompatible, biodegradable
- Ball diameter : 75 mm
- To be fixed with fast link included (chain not supplied)
- Also exists as ball alone (Ref. 6402034)

### KIT BUTÉE POUR JOUET BOIS PS - ENG



9303194

- Butée en nylon naturel
- Features :
  - Ø outside : 30 mm
  - Ø inside : 10.5 mm
  - Length : 20 mm
- Screws and bolts included

### WEAVED COTTON ACTIVITY ROPE Ø 10 MM



6402029

- Organic material (100% weaved cotton)
- 250 meters long roller (on a reel)

### JUTE CLOTHS 1600 X 600 MM



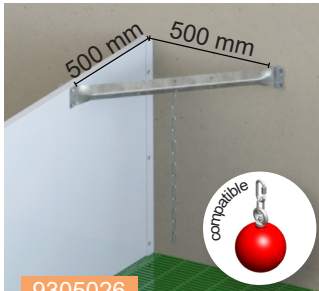
6402033

- Organic material (jute)
- Thickness of cloth : 220 g / m<sup>2</sup>
- Perfect for nesting, soothe the sows
- Biodegradable
- Can be easily tied into a knot or attached to the pen's tubular

# ENRICHMENT MATERIALS

## MARGINAL INTEREST

### TOY CHAIN KIT, CORNER ATTACHMENT



9305026

- Galvanised steel mount  
Length : 550 mm
- Stainless-steel chain  
Length : 500 mm
- Fasteners included for 50 mm thick partition
- Also available as a single mount without chain (Ref. 6402019)

### 2 CHAINS KIT, ATTACHMENT ON THREADED ROD



9305029

- Stainless-steel threaded rod  $\varnothing$  10  
Length : 330 mm
- Supplied with 2 stainless-steel chains  
Length : 500 mm
- Fasteners included for 50 mm thick partition
- Also available as a single rod without chain (Ref. 6106012)

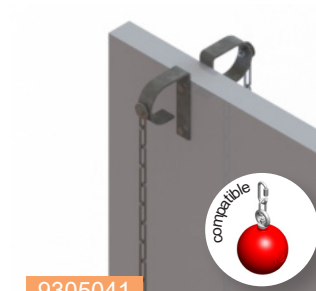
### CHAIN KIT WITH PIVOTING MOUNT



9305030

- Directional (2 positions) galvanised steel attachment mount
- Stainless-steel chain  
Length : 500 mm
- Fasteners included for 50 mm thick partition
- Also available without fasteners (Ref. 6402021)

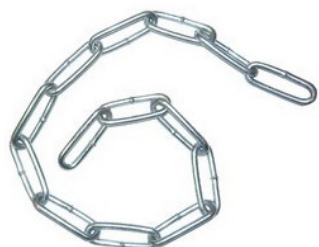
### RAM HORN TOY KIT WITH CHAIN



9305041

- Galvanized steel fixation support
- St. steel screws and chain (L. 500 mm)
- 2 Fixations on 50 mm thick partition included
- Also exists as support alone (Ref. 6402031)
- Also exists for 35 mm thick partition (Ref. 9305048)

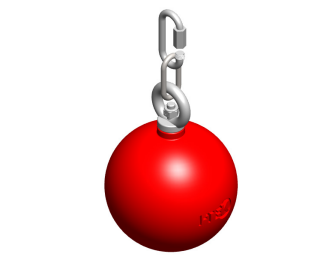
### STAINLESS-STEEL CHAIN $\varnothing$ 4 MM PER LINEAR METRE



1301040

- Long chain link (32 x 8 mm interior)
- Also available in  $\varnothing$ 6 mm, long chain link (42 x 12 mm interior) (Ref. 1301041)

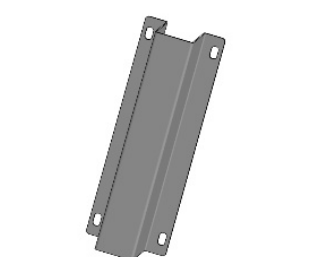
### $\varnothing$ 95 BALL KIT FOR TOY ON CHAIN



9305031

- Ball toy for finishing pigs and sows
- To be attached to a chain  $\varnothing$  6 mm maximum
- Ball diameter: 95 mm
- Quick attachment link included (chain not supplied)

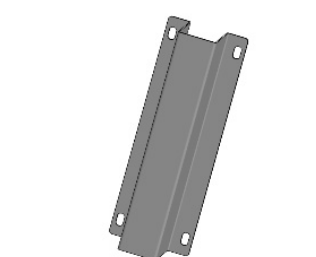
### WOODEN TOY MOUNT



6402025

- Stainless-steel mount
- Dimensions :  
Height : 350 mm  
Width : 110 mm  
Interior : 50 x 50 mm
- Also available in 75 x 75 mm, height 700 mm, width 140 mm (Ref. 6402026)

### WOODEN TOY MOUNT



6402025

- Stainless-steel mount
- Dimensions :  
Height : 350 mm  
Width : 110 mm  
Interior : 50 x 50 mm
- Also available in 75 x 75 mm, height 700 mm, width 140 mm (Ref. 6402026)